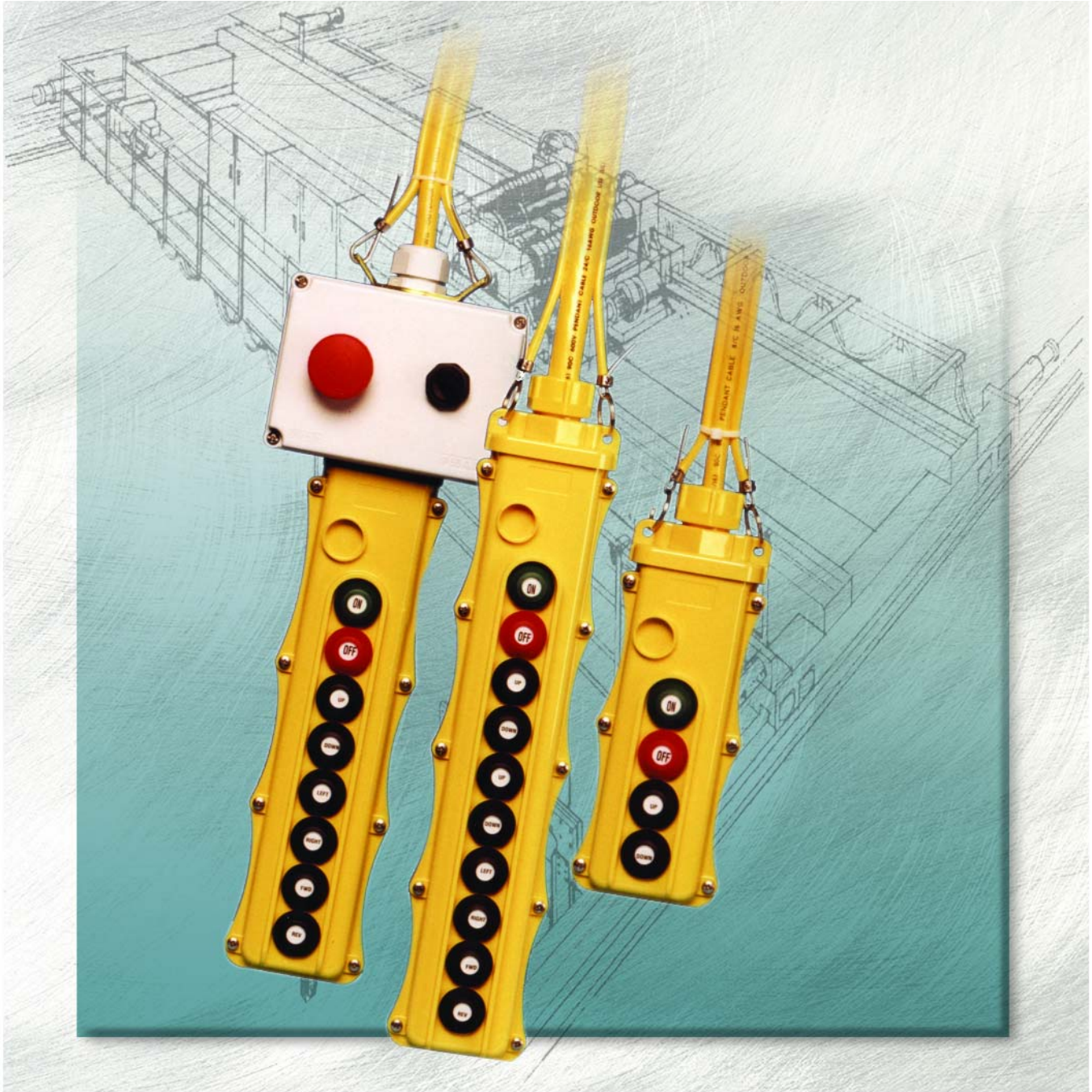


# Electromotive Systems

SBP2®

*Pendant Pushbutton Stations*

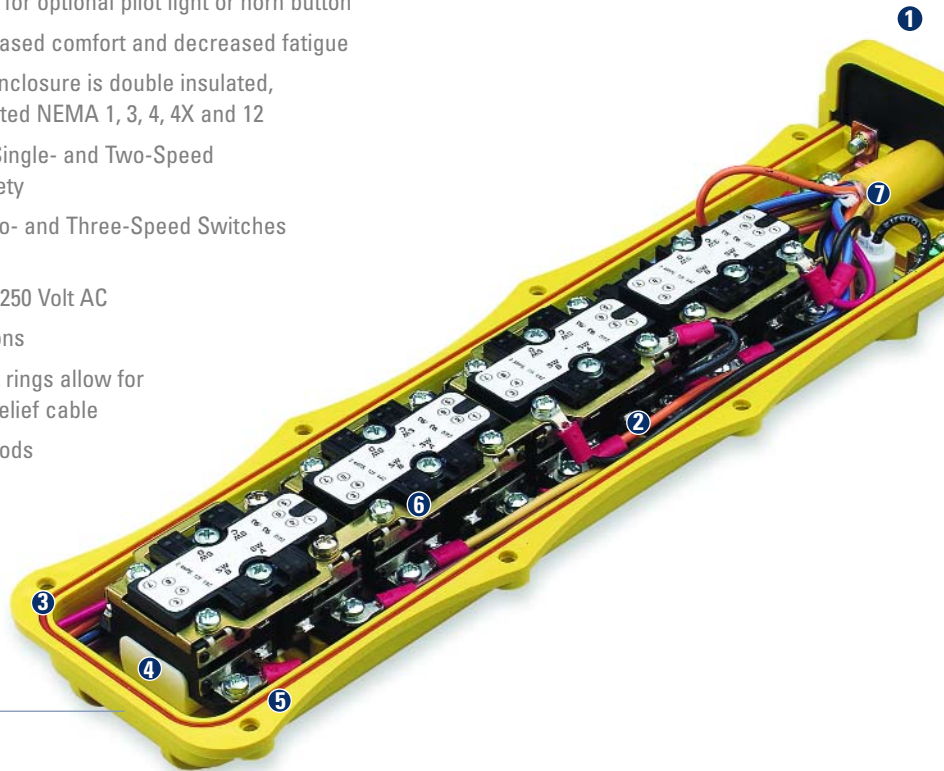


**MAGNETEK**  **UNCOMMON POWER**

## Standard Features

### All SBP2® pendant pushbutton stations include the following features:

- ① Cable grip clamps provide a water tight sealed connection between cable and enclosure
- ② Ample enclosure space for switch wiring
- ③ An elastic, chemically resistant gasket ensures a tight seal between the two enclosure halves
- ④ Switches are protected from internal / external contaminants
- ⑤ Threaded ultra-sonic inserts are included with enclosure to prevent lost hardware during assembly
- ⑥ To simplify wiring, common circuit is pre-wired on all switches
- ⑦ A shrouded knock-out hole for optional pilot light or horn button
  - Ergonomic design for increased comfort and decreased fatigue
  - Impact resistant pendant enclosure is double insulated, chemically resistant and rated NEMA 1, 3, 4, 4X and 12
  - Mechanical interlocks on Single- and Two-Speed switches for enhanced safety
  - Cumulative contacts on Two- and Three-Speed Switches provide precise detent feel
  - Switches are rated 3 Amp, 250 Volt AC
  - Easy-to-read button functions
  - Dual stainless steel hanger rings allow for easy attachment to strain relief cable
  - Easily removable button hoods and nameplates
  - Operating temperature range: -10°F to 150°F
  - UL/cUL/CSA listed
  - Quick delivery of standard models from stock



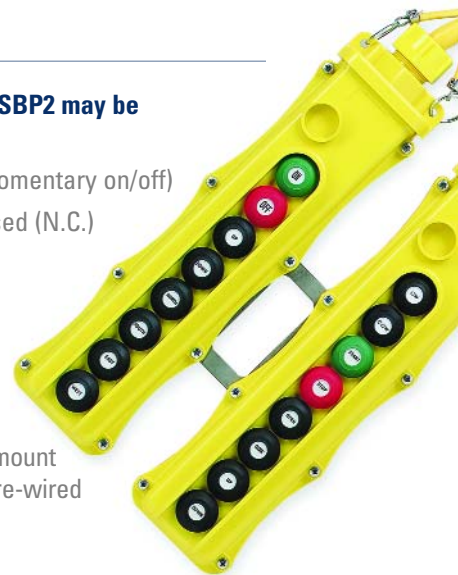
## Options Pendant Stations



Custom single and double T-box configurations are available. Consult factory for additional information.

### Configured with the various accessories listed below, SBP2 may be customized to meet any application requirement.

- Maintained two button on/off (in lieu of standard momentary on/off)
- Single Speed Switch inserts with one normally closed (N.C.) and one normally open (N.O.) contact per button
- 120 Volt AC pilot light (mounting in upper left hand accessory hole and/or standard button hole)
- On/Off key switch
- Two and three position selector switches
- Plug and/or Receptacle quick disconnect for flange mount or in-line applications available as components, or pre-wired to Electromotive Systems Cable—consult factory
- Red mushroom On/Off switch
- Blank to cover button hole
- J-Box mounting for additional switches and/or indicating lights
- Tandem Mounting (6-12 Button Pendants) for multifunction/automation applications
- Stainless steel wire mesh cable grip



SBP2® Pendant

## Ordering Information

### Complete Standard Pendant Stations

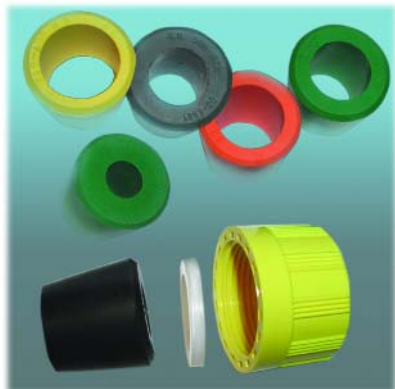
| Buttons   | Options                    | Model       |
|-----------|----------------------------|-------------|
| 2 Button  | On/Off                     | SBP2-2-WB   |
|           | All One Speed              | SBP2-2-WA   |
|           | All Two Speed              | SBP2-2-WS   |
| 4 Button  | All Three Speed            | SBP2-2-WT   |
|           | 2-One Speed with On/Off    | SBP2-4-WB   |
|           | 2-Two Speed with On/Off    | SBP2-4-WBS  |
|           | 2-Three Speed with On/Off  | SBP2-4-WBT  |
|           | All One Speed              | SBP2-4-WA   |
| 6 Button  | All Two Speed              | SBP2-4-WS   |
|           | All Three Speed            | SBP2-4-WT   |
|           | 4-One Speed with On/Off    | SBP2-6-WB   |
|           | 4-Two Speed with On/Off    | SBP2-6-WBS  |
|           | 4-Three Speed with On/Off  | SBP2-6-WBT  |
| 8 Button  | All One Speed              | SBP2-6-WA   |
|           | All Two Speed              | SBP2-6-WS   |
|           | All Three Speed            | SBP2-6-WT   |
|           | 6-One Speed with On/Off    | SBP2-8-WB   |
|           | 6-Two Speed with On/Off    | SBP2-8-WBS  |
| 10 Button | 6-Three Speed with On/Off  | SBP2-8-WBT  |
|           | All One Speed              | SBP2-8-WA   |
|           | All Two Speed              | SBP2-8-WS   |
|           | All Three Speed            | SBP2-8-WT   |
|           | 8-One Speed with On/Off    | SBP2-10-WB  |
| 12 Button | 8-Two Speed with On/Off    | SBP2-10-WBS |
|           | 8-Three Speed with On/Off  | SBP2-10-WBT |
|           | All One Speed              | SBP2-10-WA  |
|           | All Two Speed              | SBP2-10-WS  |
|           | All Three Speed            | SBP2-10-WT  |
| 12 Button | 10-One Speed with On/Off   | SBP2-12-WB  |
|           | 10-Two Speed with On/Off   | SBP2-12-WBS |
|           | 10-Three Speed with On/Off | SBP2-12-WBT |
|           | All One Speed              | SBP2-12-WA  |
|           | All Two Speed              | SBP2-12-WS  |
|           | All Three Speed            | SBP2-12-WT  |

Standard On/Off switch is momentary. For maintained On/Off, substitute B with the letter H in the catalog number.

### Cord Grip Kit

#CG-KIT

Consists of nut, friction ring and a selection of five washers for cable, ranging in diameter from 0.375" to 0.812". Cord grip is provided with factory assembled standard and custom pendant stations.



### Round Strain Relief Control Cable\*

| # of Conductors | AWG | Diameter | Weight | Catalog#  |
|-----------------|-----|----------|--------|-----------|
| 8               | 16  | 0.500"   | 0.20   | R-16/8SR  |
| 12              | 16  | 0.570"   | 0.25   | R-16/12SR |
| 16              | 16  | 0.630"   | 0.30   | R-16/16SR |
| 24              | 16  | 0.765"   | 0.40   | R-16/24SR |

Non-strain relief cable also available from stock  
\* Requires strain relief hardware

### Stainless Steel Mesh Strain Relief Cable Grips

| Cable Size Diameter | Catalog# |
|---------------------|----------|
| 0.375"-0.437"       | WRSP-208 |
| 0.437"-0.562"       | WRSP-209 |
| 0.562"-0.625"       | WRSP-210 |
| 0.625"-0.687"       | WRSP-211 |
| 0.687"-0.812"       | WRSP-212 |



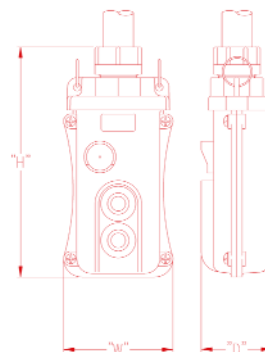
SBP2 can be supplied with a Cord Grip and Strain Relief Hardware when using strain relief cable. When using non-strain cable, a Stainless Steel Wire Mesh Cable Grip connection between the Pendant Enclosure and the Cable may be used.



Wire mesh cable grip used with non-strain relief cable. One cable grip required at pendant and one at junction-box.

### Specifications

| Enclosure | Inches (mm) | Lbs.      | Kg        |                |
|-----------|-------------|-----------|-----------|----------------|
| Size      | H           | W         | D         | Approx. Weight |
| 2 Button  | 7.41 (188)  | 3.52 (90) | 2.31 (59) | .75 .34        |
| 4 Button  | 9.77 (248)  | 3.52 (90) | 2.31 (59) | 1 .45          |
| 6 Button  | 12.12 (308) | 3.52 (90) | 2.31 (59) | 1.4 .64        |
| 8 Button  | 14.50 (368) | 3.52 (90) | 2.31 (59) | 1.6 .73        |
| 10 Button | 17.00 (432) | 3.52 (90) | 2.31 (59) | 1.85 .84       |
| 12 Button | 19.75 (502) | 3.52 (90) | 2.31 (59) | 2.1 .95        |



# Ordering Information

## SBP2® Custom Pendant Configurations

Electromotive Systems offers a wide array of standard pendant configurations. For applications where a standard assembly is not appropriate, a custom station will be pre-assembled and/or pre-wired by the factory according to your specifications. Custom pre-assembled models not wired to cable can even be shipped the same day we receive your order.

To order a customized pendant station, a catalog number may be created by using the following:

- “SBP2” Series prefix
- Number of buttons in the enclosure (excluding pilot/horn accessory)
- Switch designator suffix(es) in installation order (top to bottom)—see example

For example;

SBP2-8-RP-H2-S-A2-A2

Breakdown:      8 = 8 button enclosure  
                          RP = Red pilot in upper left knock-out  
                          H2 = Maintained on/off  
                          S = Two Speed Button  
                          A2 = Single Speed Button  
                          A2 = Single Speed Button

### Technical Advice:

- Pendant enclosures are designed for “paired” or two button switches. With that in mind, it is important to note that some accessories may need to be paired with a blank to cover buttonhole(s) where a switch is not installed.
- All SBP2 enclosures are available with a “knock out” in the upper left corner of the station. When utilized, this opening accommodates the mounting of a single button momentary (horn) or pilot light, sized just for the upper left position. No other SBP2 accessories can be mounted in the upper left position.
- All button positions should be accounted for (except the upper left position) when ordering a custom configuration. Button labels may be noted and are applied at no extra charge.
- Custom configured pendant stations may be pre-wired at the factory using Electromotive Systems’ strain or non-strain round pendant cable. Submit a wiring diagram or layout sketch with the order for non-standard wiring to your specifications.

## Accessories/Replacement Parts

|   |  |              | Switch Designator Suffix |  |
|---|--|--------------|--------------------------|--|
| <b>Enclosure Without Switches</b>   | 2 Button Enclosure*                                  | SBP2-E2      | -2                       |  |
|   | 4 Button Enclosure*                                  | SBP2-E4      | -4                       |  |
|   | 6 Button Enclosure*                                  | SBP2-E6      | -6                       |  |
|   | 8 Button Enclosure*                                  | SBP2-E8      | -8                       |  |
|   | 10 Button Enclosure*                                 | SBP2-E10     | -10                      |  |
|   | 12 Button Enclosure*                                 | SBP2-E12     | -12                      |  |
| <b>Two Button Switches</b>  | Single Speed<br>(1 N.O. contact per Button)          | SBP2-A2      | -A2                      |  |
|   | Single Speed<br>(1 N.O. & 1 N.C. contact per Button) | SBP2-AB2     | -AB2                     |  |
|   | Single Speed<br>(Each Button has 2 N.O. contacts)    | SBP2-D2      | -D2                      |  |
|   | Two Speed  | SBP2-S       | -S                       |  |
|   | Three Speed  | SBP2-T       | -T                       |  |
|   | Momentary On/Off                                     | SBP2-B       | -B                       |  |
|   | Maintained On/Off                                    | SBP2-H2      | -H2                      |  |
|   | Maintained On/Off<br>(N.O. & N.C. per Button)        | SBP2-H3      | -H3                      |  |
|   | <b>Button Covers</b>                                 | Green        | WC2-G                    |  |
|   |  | Red          | WC2-R                    |  |
| Black   |  | WC2-LB       |                          |  |
| Black   |  | WC2-BS       |                          |  |
| (High Ambient/Chemically Resistant)   |  |              |                          |  |
| 120 VAC Pilot Light<br>(Mounts in upper left corner on pendant enclosure)       | Red  | SBP2-PL-120R | -RP                      |  |
|   | Green  | SBP2-PL-G    | -GP                      |  |
|   | White  | SBP2-PL-W    | -WP                      |  |
|   | Yellow   | SBP2-PL-Y    | -YP                      |  |
| 120 VAC Pilot Light<br>(Mounts in regular button hole)                          | Red  | SBP2-PLX-120 | -XR                      |  |
|   | Green  | SBP2-PLX-G   | -XG                      |  |
|   | White  | SBP2-PLX-W   | -XW                      |  |
|   | Yellow   | SBP2-PLX-Y   | -XY                      |  |
| Momentary Button for Horn<br>(Mounts in upper left corner on pendant enclosure) |  | SBP2-BZS     | -BZ                      |  |
| Momentary Button for Horn<br>(Mounts in regular button hole)                    |  | SBP2-ABZS    | -AB                      |  |
| 2-Position Key Switch On/Off  |  | SBP2-KS2     | -KS2                     |  |
| 2-Position Selector   |  | SBP2-L2      | -L2                      |  |
| 3-Position Selector<br>(N.C. in center position)                                |  | SBP2-L3      | -L3                      |  |
| 3-Position Selector<br>(N.O. in center position)                                |  | SBP2-L3B     | -L3B                     |  |
| Red Mushroom On/Off<br>(Pull to release On)                                     |  | SBP2-SMMH    | -SM                      |  |
| Blank (To cover button hole)  |  | SBP2-BLNK    | -BL                      |  |
| J-Box for Single Pendant  |  | SBP2-JBX1    |                          |  |
| J-Box for Double Pendant  |  | SBP2-JBX2    |                          |  |

\* Replacement enclosures include:

- front, back, and top enclosure assembly
- button hoods and legends
- enclosure hardware
- cord grip kit sold separately

**As always, an Electromotive Systems Electrification Sales Professional is available to answer your questions concerning switch compatibility, arrangement, pricing or delivery at 1-800-288-8178.**

# SPB2® Pendant Pushbutton Stations

## The Lightweight Pendant Station for Heavyweight Applications



### Complete Pendant Stations

- 2, 4, 6, 8, 10 or 12 button configurations
- 1, 2 or 3 speed operations
- Standard or custom pendant stations
- UL/cUL/CSA Listed

### Ergonomic Design

- Lightweight, ergonomic design—most models weigh under 2 pounds.
- Slim-line pendant rests comfortably in the palm of your hand.
- Optimum control and performance with less effort and fatigue than traditional pendants.

### Quick Delivery

- Most SBP2 Pendants are available from stock and can be shipped the day the order is placed.

### Superior Durability

- SBP2 was designed to survive even the most brutal environments.
- High-impact resistant, watertight enclosure is suitable for any industrial application.

#### SBP2 Estimation Software

Electromotive's Electrification Software\* allows you to estimate our SBP2 Pendant Stations.

*\*Our Electrification Software allows you to estimate our Festoon & Conductor Bar systems too.*



Call our Electrification Sales Department at 1-800-288-8178 to request your CD.

# PRECISION **SOLUTIONS** FOR OVERHEAD MATERIAL HANDLING

## Engineered Solutions & Automation

- Heavy Duty / Severe Duty Crane Control
- Automatic Crane & Monorail Process System Control
- Crane Positioning, Status & Diagnostics
- Collision Avoidance Control
- Crane Swing Control
- Crane Communication Control



## IMPULSE® AC Adjustable Frequency Drives

- 230, 460, and 575 Volt Power Platforms - Up to 1,500 Hp
- Exclusive Application Software
- Specific Crane & Hoist Software

## OmniPulse™ DC Digital Drives

- 30 to 500 HP
- 200 to 600 VDC

## MAC™•2000 Motor Acceleration Control

- Single & 2 Speed

## Variable Speed Motor Control Panels

- Standard Pre-Engineered Systems
- Custom Engineered Systems

## Motors & Accessories

- Standard Inverter Duty AC Induction Motors
- Flux Vector Designed Motors

## ELECTROBAR®, ELECTROBAR® FS, ELECTROBAR ELITE®, & FABA® Conductor Bar Systems

## ELECTROMOTIVE™ Festooning Systems

- Standard Duty
- Heavy Duty
- Mill Duty

## SBP® & SBP2® Pendant Push Button Stations

- Standard 2 thru 12 Button Stations
- Custom Configured Stations

## PulseStar® Radio Remote Controls

## ReFlx®

- Collision Avoidance and Distance Detection Systems



**MAGNETEK**  
UNCOMMON POWER

## Electromotive Systems

P.O. Box 13615  
Milwaukee, WI 53213  
Phone: 1-800-288-8178  
Fax: 1-800-298-3503

N49 W13650 Campbell Drive  
Menomonee Falls, WI 53051

[WWW.ELECTROMOTIVE.COM](http://WWW.ELECTROMOTIVE.COM)

Brochure No. SBP2-03A  
Copyright © 2002  
Printed in U.S.A.