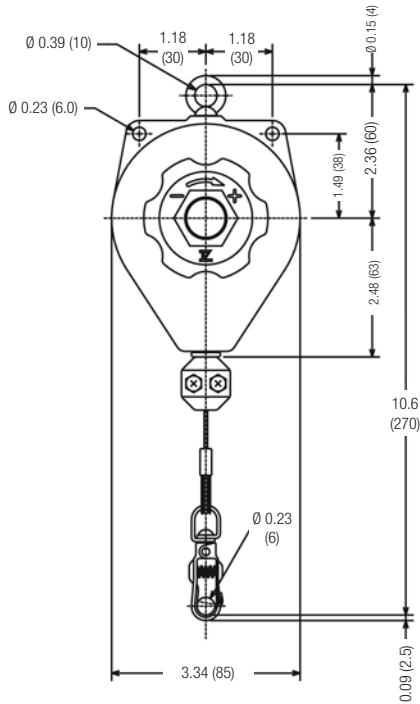


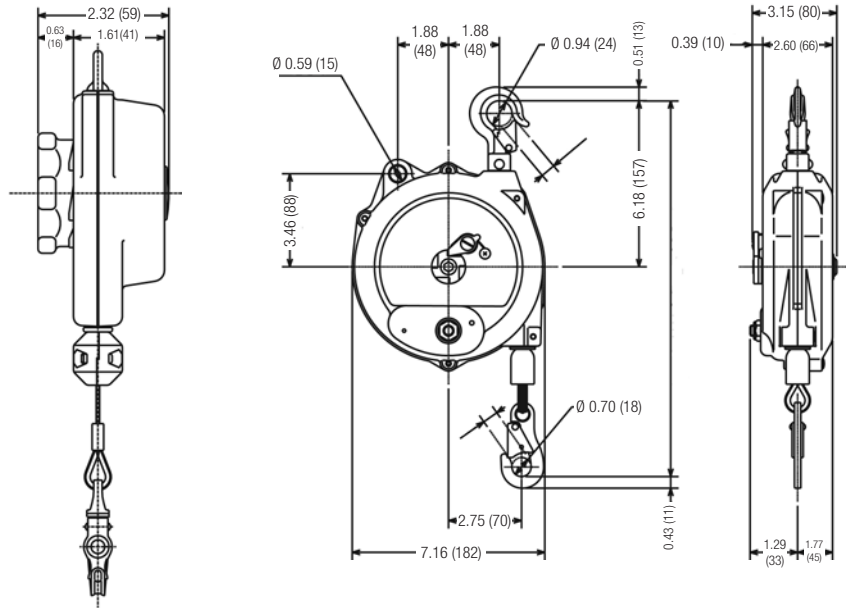
Dimensional Drawings - Series ERP, ER, EK, EW, EWF

Distributed by Ergonomic Partners, Inc. | sales@ergonomicpartners.com | 314-884-8884 | www.ergonomicpartners.com

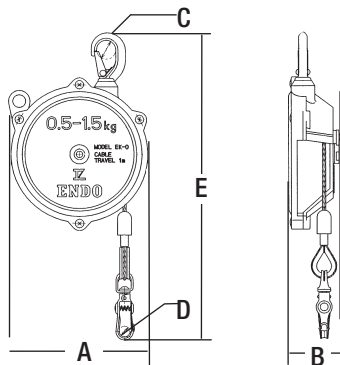
Series ERP



Series ER

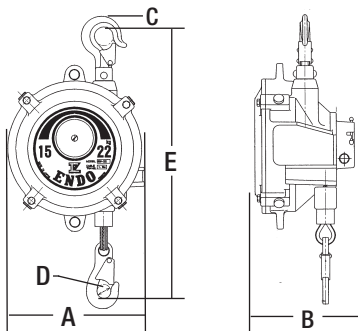


Series EK



Part No.	Dimensions				
	A in. (mm)	B in. (mm)	C in. (mm)	D in. (mm)	E in. (mm)
EK-00	3.70 (93.9)	1.30 (33.0)	0.38 (9.65)	0.24 (6.09)	6.20 to 25.9 (157.4 to 657)
EK-0	5.00 (127)	1.90 (48.2)	0.71 (18)	0.35 (8.88)	9.30 to 48.7 (236 to 123)
EW-3	5.80 (147)	2.70 (68.5)	0.79 (20)	0.55 (13.9)	11.4 to 62.6 (289 to 159)
EW-4	5.80 (147)	2.70 (68.5)	0.79 (20)	0.55 (13.9)	11.4 to 62.6 (289 to 159)
EW-5	5.80 (147)	2.70 (68.5)	0.79 (20)	0.55 (13.9)	11.4 to 62.6 (289 to 159)
EWF-3C	6.30 (160)	3.50 (89)	0.43 (11)	0.43 (11)	
EWF-5C	6.30 (160)	3.50 (89)	0.43 (11)	0.71 (18)	
EWF-7C	6.30 (160)	3.50 (89)	0.43 (11)	0.71 (18)	
EWF-9	6.90 (175)	5.40 (137)	0.95 (24.1)	0.70 (17.7)	13.4 to 64.6 (340 to 164)
EWF-15	6.90 (175)	5.40 (137)	0.95 (24.1)	0.70 (17.7)	13.4 to 64.6 (340 to 164)
EWF-22	8.60 (218)	6.20 (157)	1.18 (29.9)	0.86 (21.8)	16.9 to 76.0 (429 to 193)
EWF-30	8.60 (218)	6.20 (157)	1.18 (29.9)	0.86 (21.8)	16.9 to 76.0 (429 to 193)
EWF-40	8.70 (220)	7.40 (187)	1.18 (29.9)	0.86 (21.8)	16.9 to 76.0 (429 to 193)
EWF-50	8.70 (220)	7.40 (187)	1.18 (29.9)	0.86 (21.8)	16.9 to 76.0 (429 to 193)
EWF-60	8.70 (220)	7.40 (187)	1.18 (29.9)	0.86 (21.8)	16.9 to 76.0 (429 to 193)
EWF-70	8.70 (220)	7.40 (187)	1.18 (29.9)	0.86 (21.8)	16.9 to 76.0 (429 to 193)
EWF-90	10.5 (266)	10.2 (259)	1.25 (31.7)	0.86 (21.8)	19.4 to 98.1 (492 to 249)
EWF-105	10.5 (266)	10.9 (276)	1.25 (31.7)	0.86 (21.8)	19.4 to 98.1 (492 to 249)
EWF-120	10.5 (266)	11.8 (299)	1.25 (31.7)	0.86 (21.8)	19.4 to 98.1 (492 to 249)

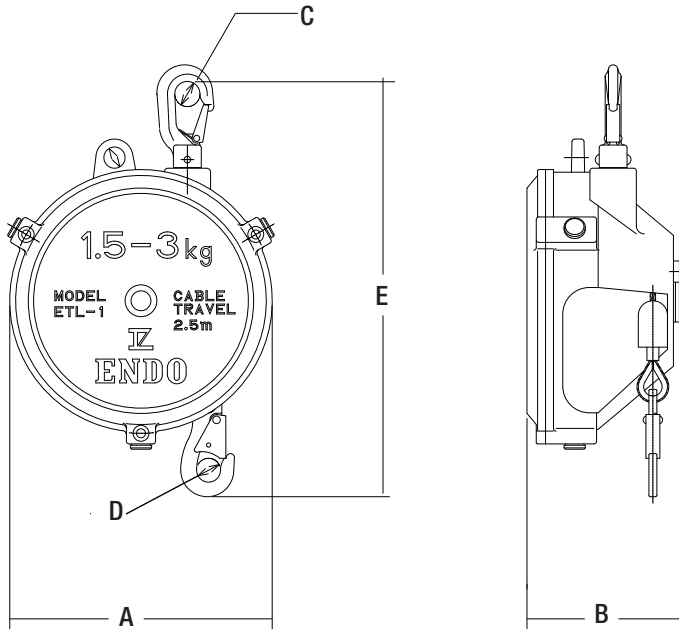
Series EW/EWF



Distributed by Ergonomic Partners, Inc. | sales@ergonomicpartners.com | 314-884-8884 | www.ergonomicpartners.com

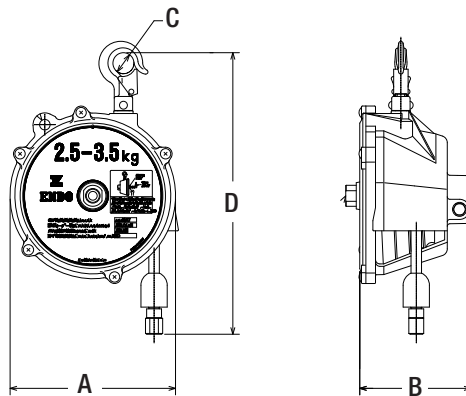
Dimensional Drawings - Series ELF, ATB, THB

Series ELF



Dimensions					
Part No.	A in. (mm)	B in. (mm)	C in. (mm)	D in. (mm)	E in. (mm)
ELF-3	7.8 (198)	4.7 (119)	0.75 (19)	0.59 (14.9)	13.7 to 112.1 (347 to 284)
ELF-5	7.8 (198)	4.7 (119)	0.75 (19)	0.59 (14.9)	13.7 to 112.1 (347 to 284)
ELF-9	7.8 (198)	4.7 (119)	0.75 (19)	0.59 (14.9)	13.7 to 112.1 (347 to 284)
ELF-15	9.1 (231)	8.4 (213)	1.18 (29.9)	0.87 (22)	17.3 to 115.7 (439 to 293)
ELF-22	9.1 (231)	8.4 (213)	1.18 (29.9)	0.87 (22)	17.3 to 115.7 (439 to 293)
ELF-30	9.1 (231)	8.4 (213)	1.18 (29.9)	0.87 (22)	17.3 to 115.7 (439 to 293)
ELF-40	9.9 (251)	9.0 (228)	1.18 (29.9)	0.87 (22)	17.7 to 116.1 (449 to 294)
ELF-50	9.9 (251)	9.0 (228)	1.18 (29.9)	0.87 (22)	17.7 to 116.1 (449 to 294)
ELF-60	9.9 (251)	10.2 (259)	1.18 (29.9)	0.87 (22)	17.7 to 116.1 (449 to 294)
ELF-70	9.9 (251)	10.2 (259)	1.18 (29.9)	0.87 (22)	17.7 to 116.1 (449 to 294)

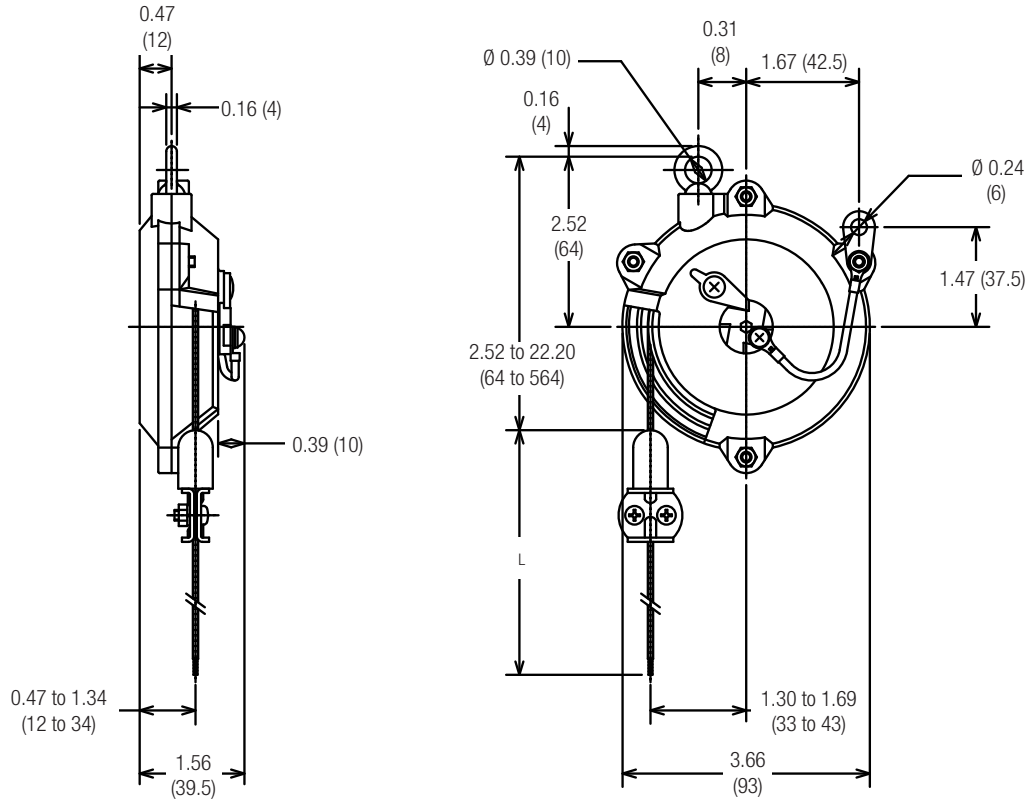
Series ATB and THB



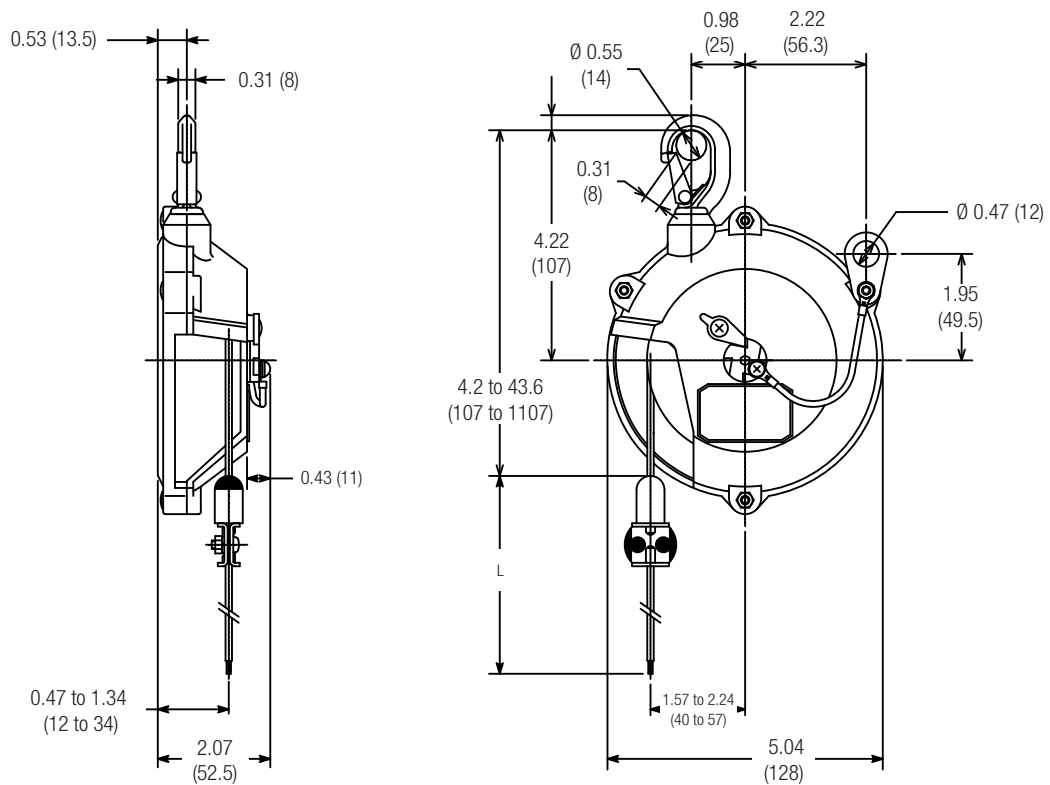
Part No.	A in. (mm)	B in. (mm)	C in. (mm)	D in. (mm)
ATB	7.5 (190)	3.3 (83.8)	0.75 (19)	10.0 to 61.3 (254 to 1557)
THB	7.5 (190)	5.0 (127)	0.95 (24.1)	10.7 to 61.9 (271 to 1572)

Dimensional Drawings - Series EKN

Series EKN-00

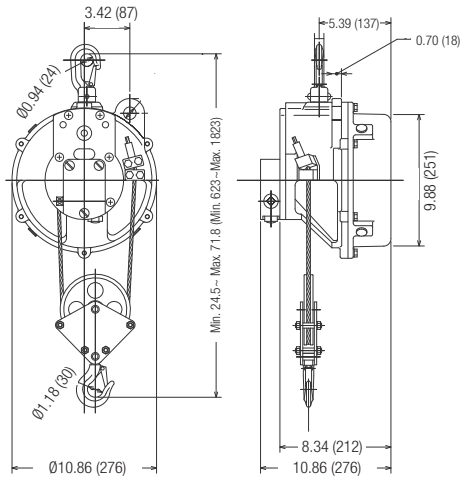


Series EKN-0

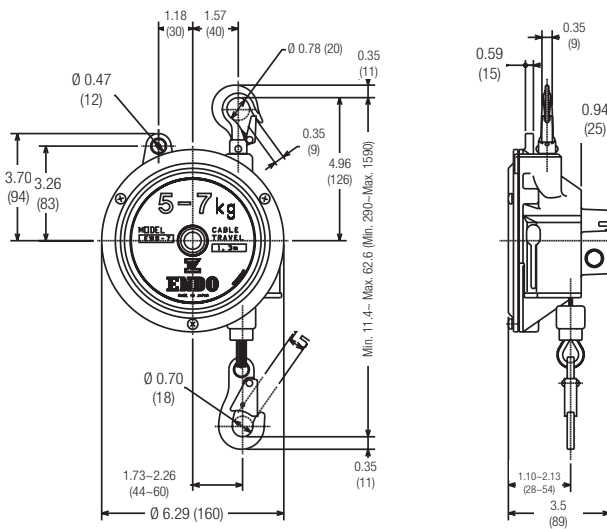


Dimensional Drawings - Series ETP, EWS, EWA

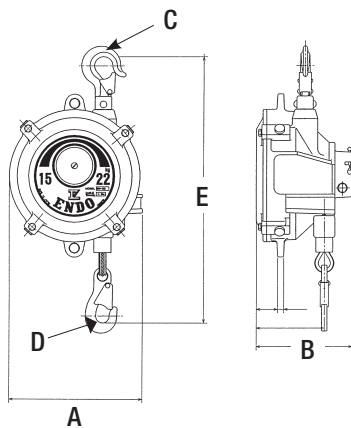
Series ETP



Series EWS



Series EWA

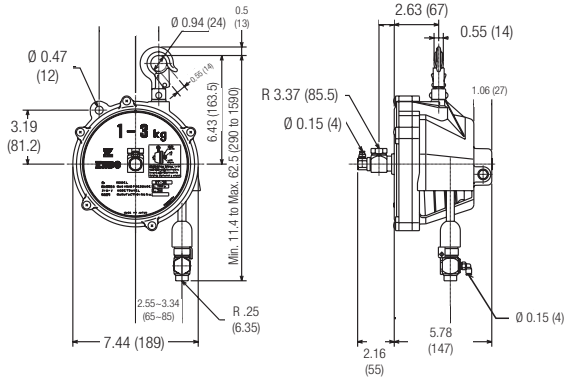


Dimensions

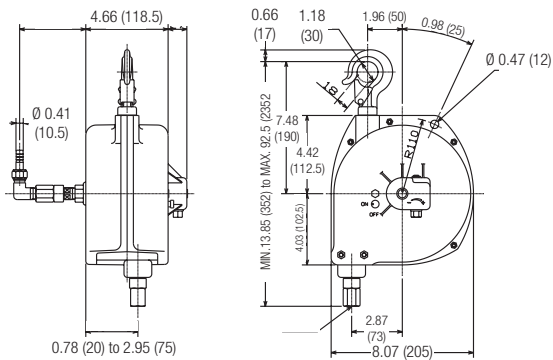
Model	A in. (mm)	B in. (mm)	C in. (mm)	D in. (mm)	E in. (mm)
EWA-22	8.6 (218)	6.2 (157)	1.18 (29.9)	0.86 (21.8)	1.69 to 76.0 (42.9 to 1930)
EWA-30	8.6 (218)	6.2 (157)	1.18 (29.9)	0.86 (21.8)	1.69 to 76.0 (42.9 to 1930)
EWA-40	8.7 (220)	7.4 (187)	1.8 (29.9)	0.86 (21.8)	1.69 to 76.0 (42.9 to 1930)
EWA-50	8.7 (220)	7.4 (187)	1.8 (29.9)	0.86 (21.8)	1.69 to 76.0 (42.9 to 1930)
EWA-60	8.7 (220)	7.4 (187)	1.8 (29.9)	0.86 (21.8)	1.69 to 76.0 (42.9 to 1930)
EWA-70	8.7 (220)	7.4 (187)	1.8 (29.9)	0.86 (21.8)	1.69 to 76.0 (42.9 to 1930)

Dimensional Drawings - Series ST, ATR, SBC

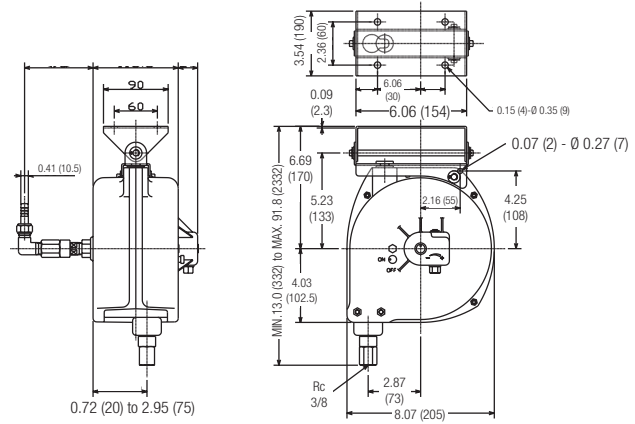
Series ST-30



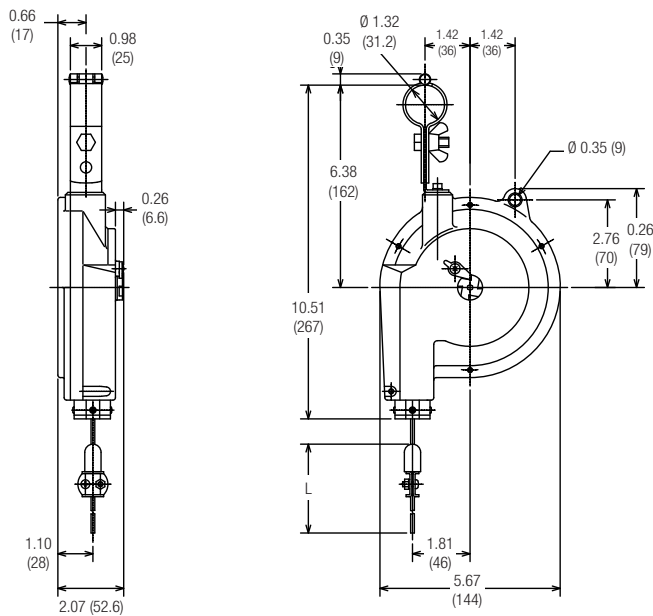
Series ATR-5



Series ATR-5-1

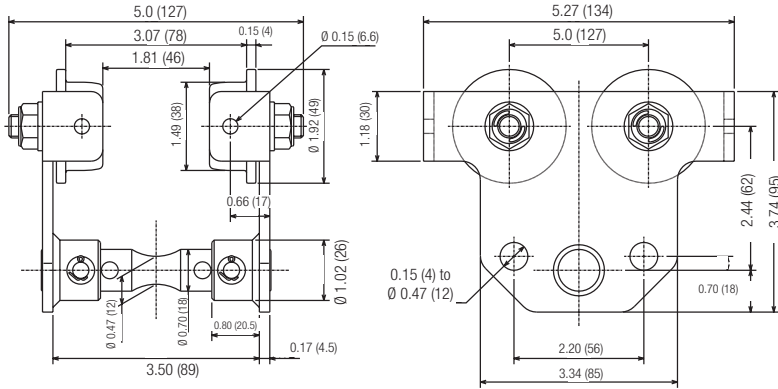


Series SBC

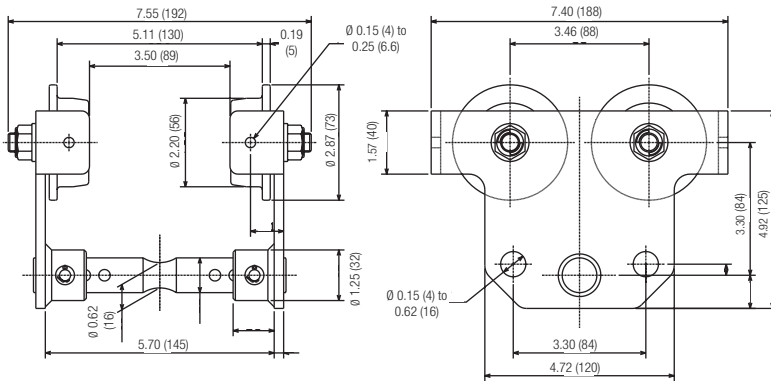


Dimensional Drawings - I-Beam Trolleys

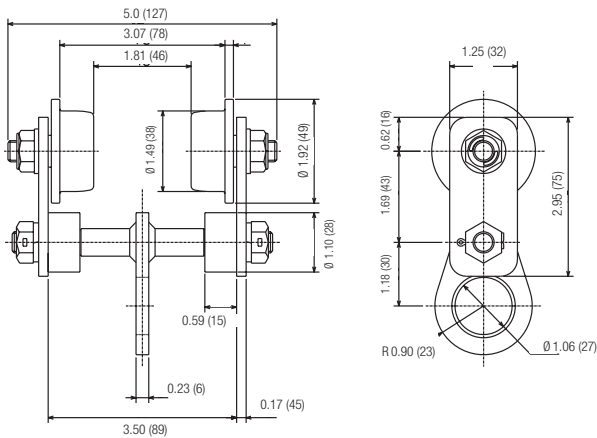
Series PTF-125



Series PTF-250



Series PTF-60



Part No.	Dimensions			
	EW	EK	ELB	ETP
PTF-60	3-60	--	15-60	--
PTF-125	3-70	11-13	15-60	--
PTF-250	3-70	11-13	15-70	14-16

ENDO Spring Balancer Warranty

For ENDO Balancers Distributed by Conductix-Wampfler

If an ENDO Spring Balancer as distributed by Conductix-Wampfler and shown on the list below, fails to perform within 18 months of the customer purchase date or within the stated "working cycles" ¹, whichever comes first, Conductix-Wampfler will supply part(s) to replace the failed parts free of charge and freight prepaid. If the Spring Balancer itself is returned to Conductix-Wampfler for repair, the freight cost and the repair labor cost shall be charged to the customer.

This warranty is valid only if the balancer has not been physically altered and has been operated and maintained in accordance with the instruction manual provided. The actual working cycles claimed by our customer will be accepted by Conductix-Wampfler based on the application offered by our customer.

Part No.	Max. Load lb (kg)	Stroke ft (m)	Working Cycles ¹
EK-00	3.3 (1.5)	1.64 (0.5)	500,000
EK-0	3.3 (1.5)	3.28 (1.0)	500,000
EW-3	6.6 (3.0)	4.26 (1.3)	500,000
EW-5	11.0 (5.0)	2.95 (0.9)	500,000
EW-9	19.8 (9.0)	2.95 (0.9)	150,000
EW-15	33.0 (15.0)	2.95 (0.9)	200,000
EW-22	48.5 (22.0)	4.26 (1.3)	130,000
EW-30	66.1 (30.0)	4.26 (1.3)	90,000
EW-40	88.1 (40.0)	4.26 (1.3)	120,000
EW-50	110.2 (50.0)	4.26 (1.3)	90,000
EW-60	132.2 (60.0)	4.26 (1.3)	90,000
EW-70	154.3 (70.0)	4.26 (1.3)	70,000
EW-90	198.4 (90.0)	4.92 (1.5)	120,000
EW-105	231.4 (105.0)	4.92 (1.5)	120,000
EW-120	264.5 (120.0)	4.92 (1.5)	120,000
ELF-3	6.6 (3.0)	6.56 (2.0)	300,000
ELF-5	11.0 (5.0)	6.56 (2.0)	300,000
ELF-9	19.8 (9.0)	6.56 (2.0)	200,000
ELF-15	33.0 (15.0)	6.56 (2.0)	50,000
ELF-22	48.5 (22.0)	7.87 (2.4)	40,000

Part No.	Max. Load lb (kg)	Stroke ft (m)	Working Cycles ¹
ELF-30	66.1 (30.0)	7.87 (2.4)	40,000
ELF-40	88.1 (40.0)	7.87 (2.4)	40,000
ELF-50	110.2 (50.0)	7.87 (2.4)	40,000
ELF-60	132.2 (60.0)	7.87 (2.4)	40,000
ELF-70	154.3 (70.0)	7.87 (2.4)	40,000
EWS-3	6.6 (3.0)	3.93 (1.2)	500,000
EWS-5	11.0 (5.0)	3.93 (1.2)	500,000
EWS-7	15.4 (7.0)	3.93 (1.2)	500,000
ETP-14	308.6 (140.0)	3.28 (1.0)	40,000
ETP-15	374.7 (170.0)	3.28 (1.0)	50,000
ETP-16	440.9 (200.0)	3.28 (1.0)	40,000
ATB-0	3.3 (1.5)	4.26 (1.3)	200,000
ATB-1	6.6 (3.0)	4.26 (1.3)	200,000
ATB-2	11.0 (5.0)	4.26 (1.3)	200,000
THB-25	5.51 (2.5)	4.26 (1.3)	200,000
THB-35	7.71 (3.5)	4.26 (1.3)	200,000
THB-50	11.02 (5.0)	4.26 (1.3)	200,000
ERP-06	1.32 (0.6)	4.92 (1.5)	200,000
ERP-1	2.20 (1.0)	4.92 (1.5)	200,000
ERP-2	4.40 (2.0)	4.92 (1.5)	200,000

¹ **Working Cycle:** Means that the full maximum rated load is carried by the balancer one full "stroke" (i.e.: starting at the bottom minimum height, then traveling all the way up, then back down to the minimum height)

Distributed by Ergonomic Partners

Sales@ErgonomicPartners.com

www.ErgonomicPartners.com

Tel: (314) 884-8884