



345 Adams Circle  
Corona, CA 92882

1351 W. Second Street  
Oconomowoc, WI 53066

1445 Norjohn Ct., Unit 10  
Burlington, ON L7L 0E6

Distributed by Ergonomic Partners | Sales@ErgonomicPartners.com | (314) 884-8884 | www.ErgonomicPartners.com

# J SERIES      PUSH BUTTON INSERTS      RPS SERIES      PSW SERIES

## SCHEMATIC & OPERATIONAL DIAGRAMS

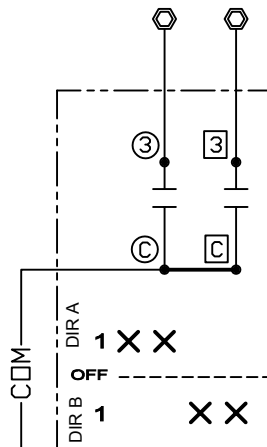
(MULTI-SPEED INSERTS ARE ALL PROGRESSIVE STEP)

### ⚠ WARNING

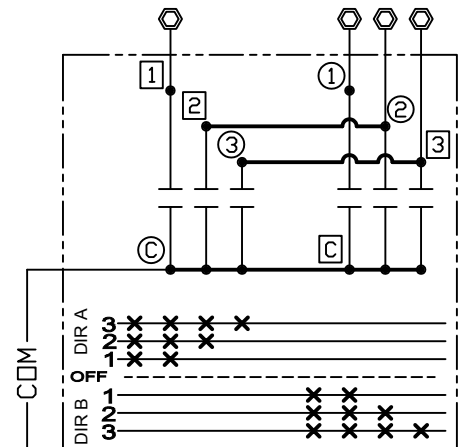
MAKE CERTAIN POWER SUPPLY IS DISCONNECTED BEFORE INSTALLING, REPAIRING, OR WORKING IN THE PROXIMITY OF ANY ELECTRICAL SYSTEM. ONLY QUALIFIED ELECTRICAL PERSONNEL SHOULD INSTALL OR REPAIR THESE PRODUCTS.

NOT DESIGNED FOR  
DC CIRCUITS

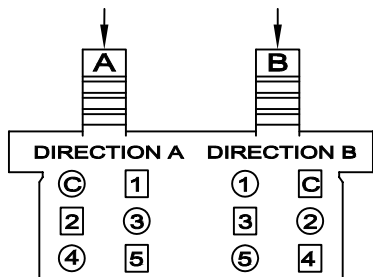
MECHANICAL INTERLOCK MODELS PB-1B, PB-3B, PB-5B, ETC. USE THE SAME WIRING DIAGRAM AS THEIR RESPECTIVE "A" MODEL.



**PB-1A  
1 - SPEED INSERT**

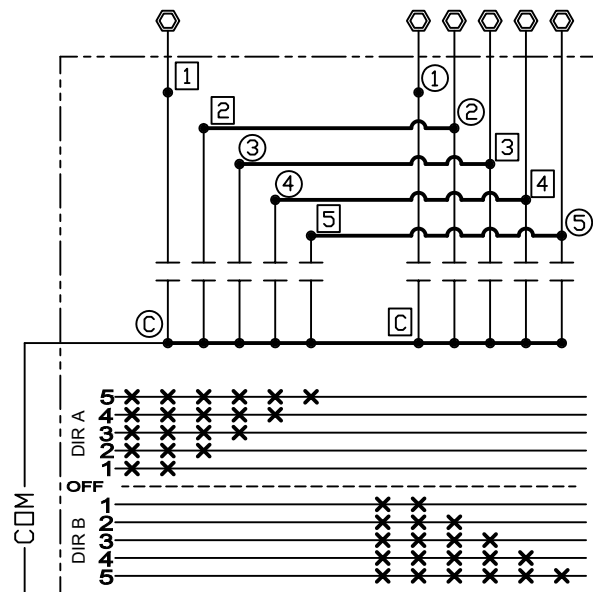


**PB-3A  
MULTI - SPEED INSERT  
3 - SPEED WIRING**



□ FRONT SIDE TERMINALS (DIR A)  
○ BACK SIDE TERMINALS (DIR B)

### TYPICAL PB TERMINAL LAYOUT



**PB-5A  
MULTI - SPEED INSERT  
5 - SPEED WIRING**

#### NOTES:

1. TERMINALS FOR SINGLE AND MULTI-SPEED PUSH BUTTON INSERTS ARE NOT ALL FOUND ON THE SAME SIDE OF THE PUSH-BUTTON TERMINAL BLOCK.
2. THE NON-MECHANICAL SWITCHES SHOULD BE ELECTRICALLY INTERLOCKED IN THE CONTROL PANEL THROUGH THE REVERSING CONTACTOR.

PUSH-BUTTON INSERT RATING: 125 VAC, ONE AMP CONTINUOUS PER CONTACT

# PUSH BUTTON INSERTS

## J SERIES      RPS SERIES      PSW SERIES

### SCHEMATIC & OPERATIONAL DIAGRAMS

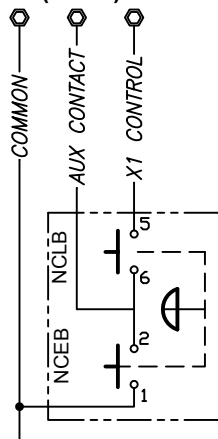
#### ⚠ WARNING

MAKE CERTAIN POWER SUPPLY IS DISCONNECTED BEFORE INSTALLING, REPAIRING, OR WORKING IN THE PROXIMITY OF ANY ELECTRICAL SYSTEM. ONLY QUALIFIED ELECTRICAL PERSONNEL SHOULD INSTALL OR REPAIR THESE PRODUCTS.

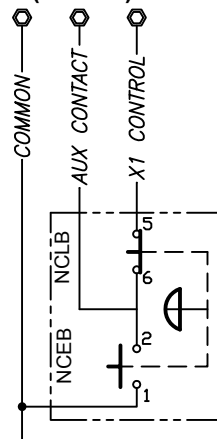
NOT DESIGNED FOR  
DC CIRCUITS

#### 3 POSITION E-STOP

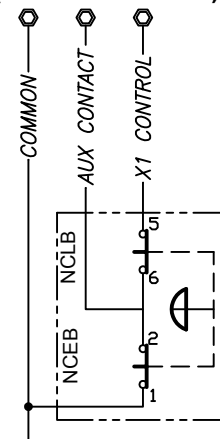
POSITION 1 = OFF  
(DOWN)



POSITION 2 = RUN  
(CENTER)

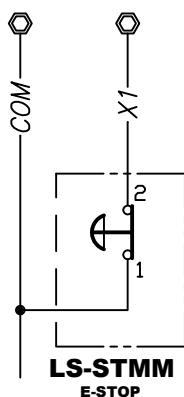


POSITION 3 = START  
(PULL - MOMENTARY)



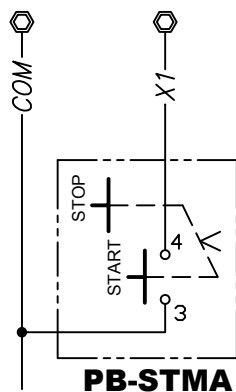
**LS-STMM-A      E-STOP WITH MOMENTARY START**

#### E-STOP

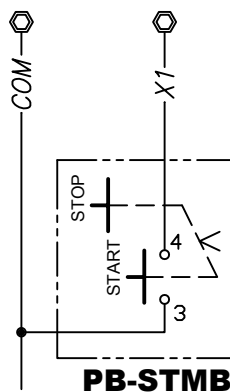


**LS-STMM  
E-STOP**

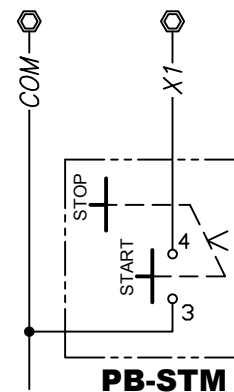
#### MAINTAINED START/STOP INSERTS



**PB-STMA**

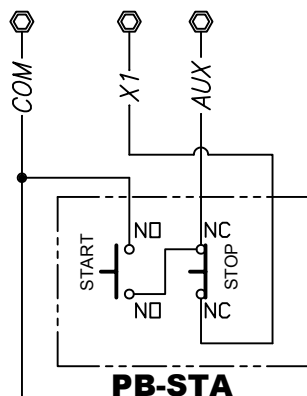


**PB-STMB**

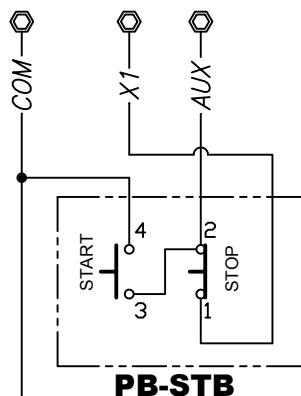


**PB-STM**

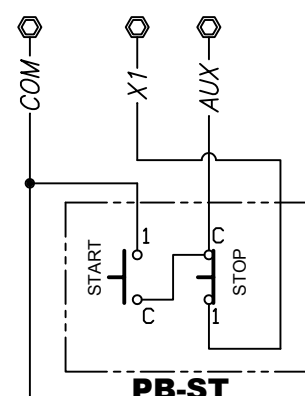
#### MOMENTARY START/STOP INSERTS



**PB-STA**



**PB-STB**



**PB-ST**

PUSH-BUTTON INSERT RATING: 125 VAC, ONE AMP CONTINUOUS PER CONTACT